
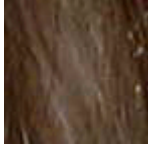

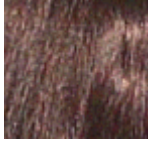

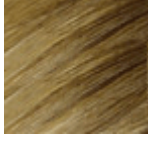

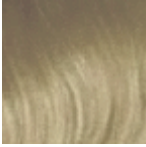


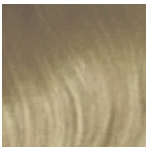
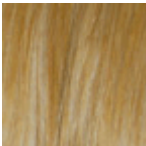
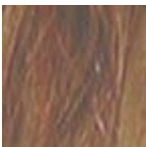
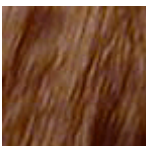


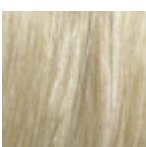


Matching your wigs and extensions... by Katie Blair <http://www.katieblaire.com>
 Here is a complete list of the fiber colors available for Kanekalon/Toyokalon wigs and their corresponding extensions. Some slight variations in color numbers and tones occur from brand to brand, but these are the most common colors on the market.

I have listed the color names from Amphigory and Dr. Locks, as those are the *only* suppliers I recommend. I will not be updating this list to include other websites, as I do not order from them, and cannot guarantee the accuracy of the colors.

Color Comparison Chart for Wigs and Extensions

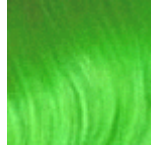
| Swatch | Color Number | Amphigory | Dr. Locks | Petting Zoo |
|---|--------------|----------------|--------------------------|--|
|  | 1 | Pixel | Jet Black (1) | Black |
|  | 4 | Coffee House | Dark Brown(4) | Black Coffee |
|  | 6 | Lavish | Chestnut Brown(6) | Black Forest Brown |
|  | 8 | Incognito | Medium Chestnut Brown(8) | Chocolate Brown |
|  | 10 | Serenity | Golden Medium Brown (10) | True Brown |
|  | 12 | Western Saddle | Light Medium Brown (12) | Golden Brown |
|  | 14 | Almost | None | Golden Ash Blonde (This color is nearly identical to 18, but with extra shimmer.) |

| | | | | |
|---|----|-------------|-----------------------|---|
|  | 16 | Honey Sweet | None | Sparkling Light Ash Blonde (This color is nearly identical to 25, but with extra shimmer.) |
|  | 18 | Calm | None | Dark Ash Blonde |
|  | 22 | Bubbly | Light Ash Blonde (22) | Light Ash Blonde |
|  | 25 | No Problemo | None | Ash Blonde |
|  | 27 | Feisty | Strawberry Blonde(27) | Chestnut Blonde |
|  | 30 | Upstage | Medium Auburn (30) | Cinnamon Brown |
|  | 33 | Luscious | Dark Auburn (33) | Dark Chocolate |
|  | 44 | None | None | Asphalt |
|  | 51 | None | Gray Mix M51 (51) | Salt and Pepper |
|  | 56 | None | 27/613 Mix | Wheat |

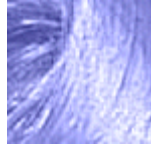
| | | | | |
|--|-------------|---------------------|-------------------|------------------|
| | 60 | Lily | White (60) | Snow White |
| | 130 | Henna-ed | Natural Red (130) | Henna Brown |
| | 131 | None | Red Auburn | Auburn |
| | 144 | Gold Coins | Gold (144) | Gold |
| | 613 | Bad Girl | Platinum (613) | Buttercream |
| | 613A | Sun Bleached Blonde | Snow | Alabaster |
| | BURGUNDY | Merlot | Burgundy | Blood Red |
| | JRED or 99J | Streaky Red | Dark Wine 99J | Black Cherry Red |
| | KAF1 | Perky | Light Pink | Bubblegum Pink |
| | KAF2 | Power | Yellow | True Yellow |



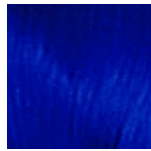
KAF3 Daydream Baby Blue Sky Blue



KAF4 Toxic Light Green Bright Green



KAF5 Femme Lavender Light Lavender



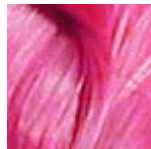
KAF6 Electric Indigo Blue (Cobalt) True Blue



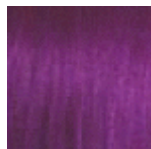
KAF7 Ravished Red True Red



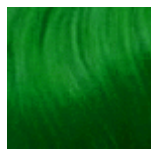
KAF18 Outrage Orange Bright Orange



KAP Ultra-Perky Hot Pink (Pink) Hot Pink



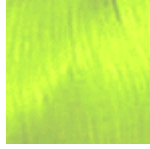
KAFM Izzy Dark Purple True Purple



YS-5 Crave Green Emerald Green



NE6 Excitable Neon Violet Fuschia



NEON

Toxic-II

Neon
Yellow/Green

Neon Yellow

"But I want a color that isn't on this list. How do I get that?"

If you are looking for a color that is not listed above, you are looking for a Custom Color...