

# French Seams

<http://sewing.about.com/library/weekly/aa012098.htm>

Dateline: 01/20/98

Debbie Colgrove

## What is a French Seam?

- A French seam is a seam which closes all raw edges within itself.

## When to use a French seam:

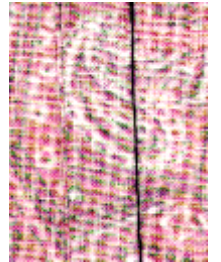
- Sheer fabric which will fray may utilize a French seam. All raw edges are enclosed without an obtrusive, heavily stitched seam finish being visible.
- A French seam will conceal seams when joining ruffle sections. If your fabric is printed on both sides a French seam will save you fabric by eliminating the need to double the fabric.
- French seams eliminate the rough edges that would be irritating to skin when creating seams in lace.

## How To Create A French Seam

1. Using a standard 5/8" seam allowance. Create a 1/4" seam with the wrong sides of the fabric together.



2. Press the seam. Fold the fabric along the seam line, so that the right sides of the fabric are together. Press well, so that you are working with a sharp crease.



3. Sew a new seam 3/8" from the folded seam edge. Press from the right side of the fabric.

